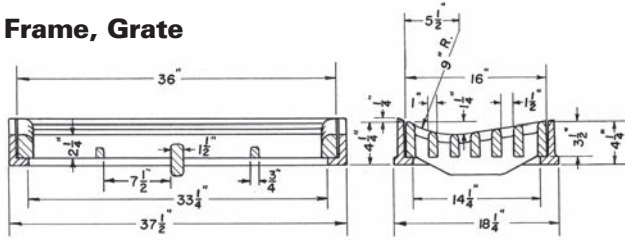


**R-3393-A
Concave Gutter Inlet Frame, Grate**

Heavy Duty

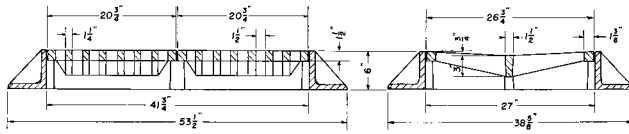


Grates are bolted to frame.

CATALOG NUMBER	GRATE TYPE	SQ. FT. OPEN	WEIR PERIMETER LINEAL FEET
R-3393-A	C	2.0	8.7

**R-3396
Concave Gutter Inlet Frame, Grate**

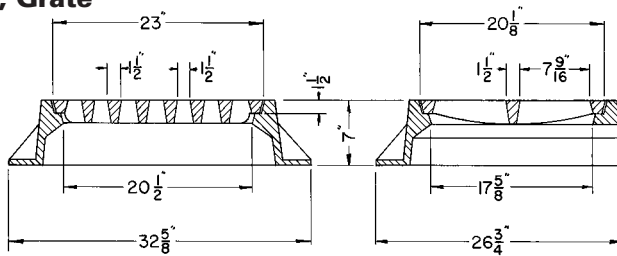
Heavy Duty



CATALOG NUMBER	GRATE TYPE	SQ. FT. OPEN	WEIR PERIMETER LINEAL FEET
R-3396	C	3.2	11.4

**R-3397
Gutter Inlet Frame, Grate**

Heavy Duty

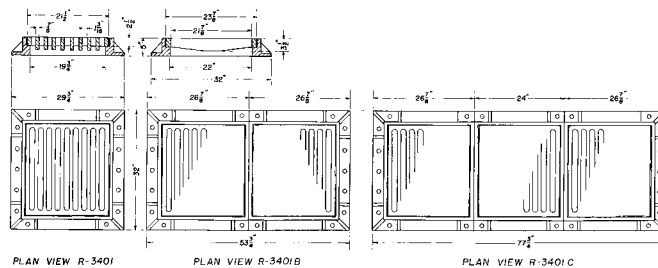


Note opening at rear of frame.

CATALOG NUMBER	GRATE TYPE	SQ. FT. OPEN	WEIR PERIMETER LINEAL FEET
R-3397	A	1.1	7.2

**R-3401 Series
Gutter Inlet Frame, Grate**

Heavy Duty



Illustrating R-3401

Catalog No.	No. of grates	CATALOG NUMBER	GRATE TYPE	SQ. FT. OPEN	WEIR PERIMETER LINEAL FEET
R-3401	Single grate	R-3401	D	1.9	7.6
R-3401-B	Double grate	R-3401-B	B	3.8	11.2
R-3401-C	Triple grate	R-3401-C	B	5.7	14.7